



United Way of Pierce County



Pierce County Connected Community Response Daily Report

Prepared by: Erika Tucci, Erika@benbcheneyfoundation.org

Effective as of: 2 p.m., April 2, 2020

The Pierce County Connected Community Response Committee is working diligently every day to source and vet information to share across networks as we all work together to meet human service needs.

If you have information to contribute, please email us.

Please see the last two pages of this report to learn more about this response.

OPERATIONS (What's Happening)

Food System:

- Governor's office has assembled a Food Security Coordination Team (FSCT). The FSCT includes state agencies coordinating hunger relief (WSDA, OSPI, DSHS, DOH, SCC) as well as non-profit hunger relief organizations (Second Harvest, Northwest Harvest, and Food Lifeline). Team is aware of issues, and working ensure state doesn't switch one public health crisis for another.
- WA State Dept of Agriculture (WSDA) has [a webpage set up to provide information for hunger relief organizations](#). Webpage has information about 2x/week calls for hunger relief providers. Calls are a great source of information about needs, responses, and action that is being taken.
- **Ideally, local resource needs and specific questions should be funneled to the Governor's FSCT through lead contractors or local EOCs.**
(Seth Kirby, Liaison in this response, is working with PC EOC. Seth is sharing information we gather through this collaboration with the EOC daily.)

- Report from Emergency Food Network: Looking for warehouse space for the food coming from USDA on 4/7/20. Need gloves, masks and sanitizer for volunteers in the food banks, and refrigerated trucks for delivery.
- **Food Update From Pierce Co. EOC:**
Pierce County EOC has developed a team that has been planning for and addressing resource requests from across Pierce County.

Specific actions in Pierce County Include:

- Re-deploying PC government employees to staff food banks.
- Working with EFN to address long-term resource needs including potential needs for additional warehouses and distribution trucks.
- Supporting School Districts in daily food operations and family food distribution over the weekends.
- Working to address school food vendor shortages.
- Working with Higher Education to support student access to food.

The Pierce County EOC team is planning for potential long-term food shortages. Planning efforts includes:

- Planning for community distribution including schools and food banks.
- Collaborating with Snohomish County in working with the Grocery Supply Chain community in Washington State.
- Participating in FEMA Region 10 Grocery Supply Chain conference calls.
- Working with DSHS to track growth in SNAP and WIC benefits.
- GIS is developing maps that identify food islands. Data includes:
 - Grocery Stores
 - Public Transportation Routes
 - Food Bank Locations
 - Census Data
- Report Pierce County Human Services: Home Care Agency needs PPE for volunteers who make home deliveries of meals.
- Report from Salvation Army: Not providing financial help until after the pandemic subsides. Still operating drive-thru food banks. Get about 100+ people per day. Making deliveries on Wednesdays to SHAG in Tacoma for their senior center.
- United Way is hosting 30-minute coordination calls for food providers at 11 a.m. each Monday. If you would like to join these calls, email Shawn Paton at shawnp@uwpc.org.
- According to the News Tribune, [the National Guard will be activated to support logistics at Nourish Food Banks](#). We have been told Guard operations will support logistics, not crowd control.
- Tacoma Mutual Aid Collective and AID Northwest are accepting food donations for their clients. Contact them directly to help.

Shelter & Housing:

- WA State Dept of Commerce announced the following opportunity: [Counties look for community heroes to house the vulnerable: \\$30 million grant allows counties to work with hotels to provide emergency housing during COVID-19 Stay Home, Stay Healthy order](#)
- Report from Tacoma Housing Authority: Still releasing vouchers and making Section 8 payments. Currently have 80 people actively looking for housing with a Section 8 voucher. Extending deadlines for 60 days as it is more difficult to find housing with the social distancing.
- From PC Emergency Management: temporary care center for those who need a place to quarantine will open tomorrow. They received supplies from the state that they are distributing through EOC. The Tacoma Chaplaincy is working with EOC on calls received for emotional support.
- The Tacoma Rescue Mission continues to provide all of our services. Some ways to support:
 - Volunteer for meal service or the donation center. Please keep in mind [volunteer guidelines](#).
 - Give a financial gift
 - Pray for the health of our guests, volunteers and staff
 - Donate needed items
 - Disposable gloves, masks, and hand sanitizer
 - To-go containers, disposable utensils, etc. for meals
 - Soap, deodorant, feminine hygiene products, etc.
 - Towels, underwear, undershirts and socks

To learn more, visit trm.org/covid19update or call 253.383.4493.

- [Franklin Pierce Youth First Coalition](#) introduced a new Prevention Rental Assistance program being operated by Share & Care House. This program is intended to provide rental assistance to help households **maintain existing housing** due to circumstances related to COVID-19 (e.g. loss/reduction of employment, quarantine, etc.). Households must be at or below 50% AMI and must live in Pierce County, outside the borders of the City of Tacoma (the City will be launching a similar program for residents inside city limits). Interested participants can contact Share & Care House directly at either 253-841-8886 ext. 800 or COVID-RA@shareandcarehouse.org. Info available in [English](#) and [Spanish](#).
- Stay at home mandates are the worst-case scenario for domestic violence victims. If they were walking on egg shells before, they are now walking on broken glass. The City of Tacoma has seen a 73% increase in DV calls in the last few weeks. It is likely many women are not calling because either they cannot access a phone with their abuser in the house 24/7 or they are undocumented and therefore will not call the police out of fear.

First Responder Childcare:

- Tacoma Public Schools have 2,500 laptops for distribution, starting today. Learn more at tacomaschools.org/laptop
- Starting today, the Boys & Girls Clubs of Pierce Co. will be providing free grab and go lunch and breakfast to those 18 and under at 3 Club locations, M through F;
 - Lakewood – 10:30 to 12:30
 - Schatz – 10 a.m. to noon
 - Bremerton – 10 a.m. to noon
- Boys & Girls Clubs opened sites in Tacoma and Belfair to serve children of first responders. Tacoma is operating at Al Davies Branch in partnership with Tacoma Public Schools and many others. Belfair is operating in partnership with the North Mason School District at North Mason Teen Center. No charge. 40 youth K-5 served at each. 6:30 AM - 7:30 PM, M through F. Meals and snacks provided. Kid to staff ratios are (8:1) to ensure safe social distancing. Healthcare partners provided medical protocols for the nurses on-site, including screening each child and staff member when they arrive. Due to this program's heightened safety standards, the weekly cost for providing up to 65 hours of care for one child is \$450.
- Olive Crest highlighted this hotline for families in crisis. The line typically offer host family situations but are also helping with other needs at this time. Safe Families for Children 24/7 hotline at 1-877-341-7332 or <https://safe-families.org/get-help/>

General Info:

- Organizations are having challenges sourcing and ordering protective equipment and cleaning supplies. Pierce County Emergency Management and Tacoma-Pierce County Health Department are going to provide Seth Kirby (*our liaison*) with clarity about what, if anything, PCEM and TPCHD can help with in the process. Seth will share that out info here as soon as possible.
- Rep. Kilmer extends an invitation for everyone to join us for a tele-town hall with the US Small Business Administration to talk through the new relief programs that are available to nonprofits. This will take place on [his Facebook page](#) **TOMORROW, 4/2, at 4pm.**
- What Nonprofits Should Know About the \$2.2 Trillion Federal Covid-19 Aid <https://www.philanthropy.com/article/What-Nonprofits-Should-Know/248386> A comprehensive digest steps to take now from the *Chronical of Philanthropy*.

- [WA State Unemployment COVID-19 application checklist](#) – what to know before you apply.
- Today is Census Day. Monitor [Census 2020 self-reporting percentages](#).
- [FEMA grants Pierce County \\$15 million for coronavirus response](#)
The federal government has awarded a \$15 million grant to Pierce County to help cover the costs of responding to the coronavirus pandemic. The money will help pay for new medical protective gear, testing sites and buying or renting space for isolation and quarantine centers.
- [Small Business Resiliency Guide](#) – from Washington SBDC
A workbook to help you maintain business continuity and plan as you go.
- [Employment Security COVID-19 Scenarios and Benefits Available one-sheet](#)
- [Successful Cashflow Management](#) – from Washington SBCD
- [5 Keys to Accurate Cashflow Forecasting](#) – from Washington SBCD
- [Shared Work Program Overview](#)
SharedWork is a voluntary business sustainability program that provides flexibility to retain employees at reduced hours. This is a powerful program to help workers stay employed while drawing needed benefits.
- Pierce County has 42 new cases for a total of 423 cases and 7 deaths.

LOGISTICS (Resources)

Funding:

- [Changes to Charitable Contributions](#) *(for fundraisers to know)*
Above-the-line deduction. Charitable contribution deductions are ordinarily claimed on a Schedule A attached to a Form 1040 income tax return. This limits the tax benefit to only those taxpayers who have itemized deductions in excess of the standard deduction. The Act allows a non-itemizing taxpayer to claim up to a \$300 “above-the-line” charitable contribution deduction against their income without the need to itemize deductions for tax years beginning in 2020.

Change in cash contribution limits. Before the Act was signed into law, an itemizing taxpayer could only deduct cash donations to charitable organizations for an amount up to 60% of their adjusted gross income. The Act modifies this rule for cash contributions made in the 2020 calendar year

and allows a taxpayer to deduct cash contributions up to 100% of a his or her adjusted gross income. Any excess can be carried forward. If the cash contributions are made by a partnership or S corporation, each partner or shareholder must elect to have the provision apply to obtain the deduction.

The Act also increases the allowable deduction on the donation of food inventory from 15% to 25% of taxable income.

Volunteers:

- The United Way of Pierce County has offered to host any [requests for volunteers](#) on their website so we can communicate one source. **Please promote** their webpage and encourage volunteers. **Send requests** for volunteers their way for posting. This will give our community one central place to manage the volunteer situation and make sure everyone is safely volunteering.
- Serve WA, with review from the Governor's office, released [guidelines for safe volunteering in Washington](#).
 - **If hosting volunteers:** please post and adhere to these guidelines.
 - **If asking for volunteers:** please use these bullet points in your ask to promote safe volunteering in essential nonprofit services only.
 - Please engage volunteers in a safe manner.
- Pierce County JIC is working on public messaging out about safely volunteering. Calls for volunteers meet conflicting reports to stay home. There is a need for an official message about volunteering for essential services to come from trusted sources.
- Report from Ben, Tacoma Chaplaincy: Coordinating w/ the National Guard on volunteer management. Providing emotional support services through EOC.

Faith Community Resources:

- No report today.

ONLINE RESOURCES:

General Information

- [State of WA COVID-19 Response Website](#)
- [Governor's Website of Resources](#)
- [WA House Republicans Website Listing of COVID-19 Resources](#)
- [COVID-19 Equity Response Information](#)

Funding/Financial Resources

- [Info on regional Rapid Response Funding Programs related to COVID-19](#)
- [Philanthropy NW Multi-state List of COVID-19 Funds](#)
- [Employment Security Resource Page](#)
- [Tacoma Public Utilities' COVID-19 assistance website.](#)
- [Puget Sound Energy's COVID-19 assistance website.](#)
- [List of Coordinated Entry access points](#)
- [Piercecountywa.gov/veterans](#) (veteran specific supports)
- [WA Dept. of Veterans Affairs webpage](#)
- [Chronicle of Philanthropy article on Federal COVID Relief Fund](#)
- [National Council of Nonprofits COVID resources](#)
- The City of Tacoma [has financial resources for business and nonprofits,](#) including be [the COVID-19 Stabilization Loan Program.](#)

Foodbanks & Feeding Sites

- [List of Pierce County's free breakfast and lunch for kids by district.](#)
- [Updated list of operating food banks in Pierce County.](#)
- [The most current information from the USDA.](#)

Child & Families

- [Graduate Tacoma & Urban League Resources](#)
- Child Care Resources [resource and referral webpage](#)
- Graduate Tacoma is coordinating volunteers for TPS efforts. [Register online.](#)

Protecting the Protectors

- [Guidelines for Good Practice: Managing Stress in Humanitarian Workers](#)
- [Stress and Coping During Coronavirus](#)
- [Emergency Responder Wellness](#)
- [Compassion Fatigue](#)
- [Traumatic Incident Stress](#)
- [Reducing Risks Associated with Long Work Hours](#)
- [Resilience Resources for Emergency Response](#)
- [Psychological First Aid for First Responders](#)

Pierce County Emergency Food System

The emergency food network in Pierce County consists of 82 food pantries, meal sites, and shelters partnered with Emergency Food Network (EFN). EFN's partners served 1.3 visits in 2019, and average of 114,000 visits per month. EFN distributed 14 million pounds of food in 2019, more than 50% of food in the system. Some of EFN's Partner Programs procure their own food through purchase or donations while others rely on EFN for 100% of their food.

EFN's Role

- Collects food in bulk for region's food pantries, meal sites, and shelters. EFN distributed 14 million pounds of food in 2019, more than 50% of the food that went out to the network.
 - Donated food comes from grocery stores, farmers, and food drives and nonprofit partners like Northwest Harvest
 - Purchases food by the semi-truckload
 - Brings in government food as the county contractor for The Emergency Food Assistance Program (TEFAP)
 - Grows fruits and vegetables at Mother Earth Farm
- EFN has a larger storage capacity for food than food pantries. Instead of one semi-truck going to one program and overwhelming that site, the load goes to EFN and is divided throughout the region.
- EFN also provides equity across the county, ensuring that smaller, remote communities with limited resources, like Eatonville, have access to resources that may otherwise stay in Tacoma or Lakewood.
- EFN also provides Partner Programs with pass-through funding, best-practice guidance, and assistance with equipment resourcing.

Role of Northwest Harvest and Food Lifeline

- Larger, state-wide entities that have a limited scope in Pierce County.
- Agencies provide some food to Pierce County either directly to sites or distributed through EFN

Covid-19 Response

- Washington State divided into 3 regions focusing on Covid-19 response
- Pierce County will fall under Northwest Harvest jurisdiction for response, but EFN will serve as primary resource for the county and will work with Northwest Harvest on a united response to the crisis.
- EFN is currently making additional food purchase to increase the amount of food available in Pierce County's emergency food system as a result of the Covid-19 pandemic.

Prepared by Emergency Food Network 3/26/2020, for more information contact Michelle Douglas, CEO, at MichelleD@efoodnet.org or 253-584-1040 (office) 253-208-2962 (cell)



Potential impact of COVID-19 on Pierce County

COVID-19 Response Needed

- State-wide authorized coordination body to lead response of nonprofit and government agencies. This body should assess resources, lead centralized planning, and organize county-based response in coordination with the entire state.
- Cash disbursements to families to keep families afloat and to lessen need for emergency food.
- Online, centralized communication directing households to available resources. Many families will be visiting food pantries for the first time and will need assistance navigating resources.

Community Need

- 1 in 7 adults and 1 in 5 children are food insecure in Pierce County.
- 60,542 students in Pierce County receive free or reduced-cost meals at school, 44% of students.
- Monthly food pantry visits in 2019: 114,618. Total visits in 2019: 1,375,411.

Emergency Food Network (EFN)

- Pierce County's emergency food distributor, provides network of 82 food pantries, meal sites, and shelters with food and pass-through funding.
- Regional contractor for federal food and funds from USDA through The Emergency Food Assistance Program (TEFAP) and the Trade Mitigation Program (TMP) as well as state funds through Emergency Food Assistance Program (EFAP).
- EFN distributed 14,081,397 pounds of food in 2019, average of 1,117,449 pounds per month.

Anticipated Impacts of COVID-19

- Northwest Harvest estimates that 640,000 households statewide are impacted and that the number of households visiting food pantries could increase by 80%.
- Northwest Harvest estimates that the most acute need will last for 8 to 20 weeks, with dire need accelerating 3 weeks from 3/19/20.
- USDA estimates that visits by households could increase by 400-600% as households will need to visit food pantries more frequently to receive groceries as a result of lost wages or jobs.
- Based on USDA estimates, Pierce County food pantries could see 732,000 visits per month during peak need, up from a monthly average of 114,618.
- EFN would need to increase monthly food distribution by 7.5 million pounds per month to accommodate peak need
- Staff and volunteers serving on the front lines at food pantries and shelters face the burden of fatigue due to the increased need and the risk of exposure to Coronavirus.

A coordinated, statewide effort focused on procuring food and funds and distributing those goods to families is essential to keeping Washingtonians health and fed during these times.

Prepared by Emergency Food Network 3/26/2020, for more information contact Michelle Douglas, CEO, at MichelleD@efoodnet.org or 253-584-1040 (office) 253-208-2962 (cell)

PIERCE COUNTY CONNECTED

The Pierce County Connected Community Response Committee supports an aligned philanthropic response to COVID-19 in Pierce County.

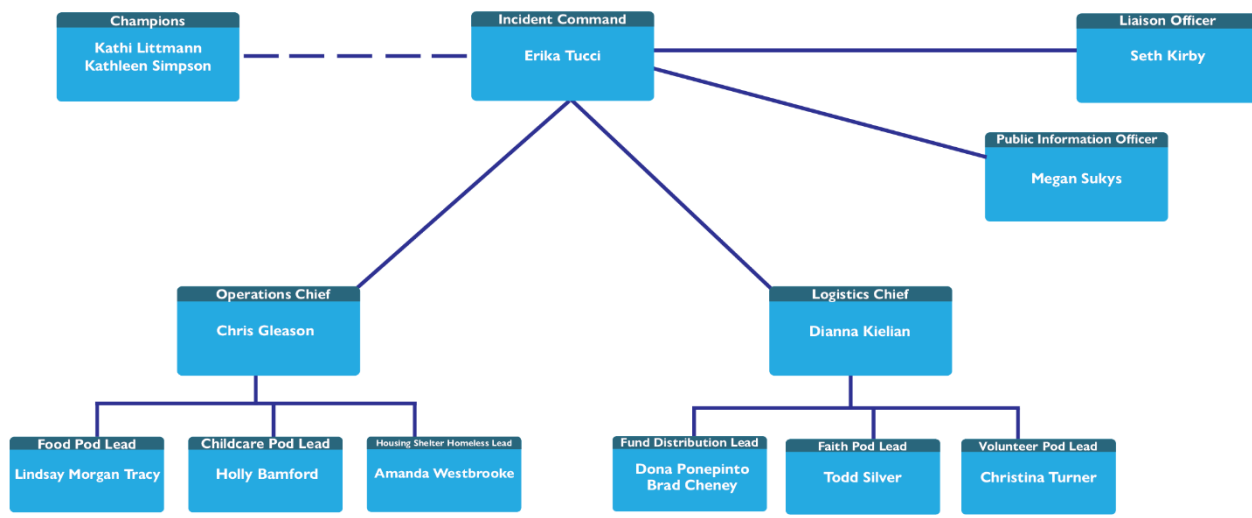
Through coordinated contacts with organizations in key service sectors, referred to as 'pods', real-time on-the-ground information will be compiled and shared in a regular report to all participants.

The goal of these contacts and reports is to provide information that can reduce unnecessary duplication of efforts and surface emerging and urgent needs for rapid response.

Report information is intended to support streamlined communications:

- between nonprofits and other community service providers about who is providing help and what needs there are in Pierce County related to COVID-19
- from the nonprofit sector to individual donors, foundations, and corporations about urgent funding needs
- from nonprofits and community service providers to government agencies about needs to meet effective and continued services in Pierce County related to COVID-19
- with the philanthropic field about lessons and successes around addressing COVID-19 in Pierce County in an aligned way with the lowest burden possible on nonprofits and service providers

PIERCE COUNTY CONNECTED COMMUNITY RESPONSE COMMITTEE



OVERVIEW:

As the public health response to COVID-19 in Pierce County escalated Friday, March 13, United Way of Pierce County and Greater Tacoma Community Foundation partnered for an aligned philanthropic response to emerging community needs.

Together, they launched the PIERCE COUNTY CONNECTED fund, seeded with \$750,000 from GTCF. GTCF committed another \$1M in matching dollars for regional funders joining in the effort. By March 26, 25 regional funders contributed more than \$2M, exceeding the GTCF match and bringing the total fund to \$3.8M.

To support shared learning and aligned response efforts across community sectors, including funding partners to the Pierce County Connected fund, nonprofits, municipal agencies, and community donors and volunteers, a COMMUNITY RESPONSE COMMITTEE was established to provide real-time, on-the-ground information from providers about impacts and needs due to the COVID-19 pandemic.

The Community Response Committee is informed by the structure and protocols of an Incident Command Structure (ICS). ICS is used across the country by fire, FEMA, and other governmental organizations to streamline resources and communication during emergencies.

The goal of the Community Response Committee is to ensure real-time, on-the-ground information is surfaced in a way that supports aligned philanthropic response by funders, donors, nonprofits, and community-serving agencies with a minimum of burden placed on nonprofits actively providing services.

The Community Response Committee is organized by priority operational areas – called pods. The first set of pods are based on immediate needs surfacing at the system level since March 13: Food, Housing, First Responder Childcare, Funding, Faith Community Response, and Volunteer Coordination.

As the community impacts of COVID-19 and the necessary public health measures to slow the pandemic evolve, the Community Response Committee may scale up to survey and inform other communities disproportionately affected by COVID-19 like: Mental Health, Individuals with Physical Disability, Elderly, Immigrants, First Responders, and Youth.

The Pierce County Connected Community Response Committee will:

- Work in the best interest of the Pierce County community and its residents.
- Facilitate sector collaboration and communication.
- Provide a central point of verified information and communication for the sector.
- Staff the philanthropy liaison position inside the Emergency Operations Centers to represent the sector with daily updates and information received from the pod leads.
- Provide Pierce County-specific guidance from pods to funders to help them make informed COVID-19 response funding decisions.
- Help advocate with government entities for resources and policy decisions as needed.

The Pierce County Connected Community Response will not:

- Extend its scope beyond the immediate COVID-19 public health crisis.
- Take ownership or responsibility of the service provision.

Pod leads, as shown into the organizational chart, will be reaching out to organizations within those sectors to arrange ways to get regular updates to inform the reports. The goal is for these check-ins to take a minimum of time for participants, in respect the tremendous amount of work organizations are already doing to support the community during COVID-19.